

COMPOSITES

Light-curing sub-micro-filler composites for direct restorations

***TOKUYAMA – Pearls
amongst composites***



TOKUYAMA Composites – The benchmark for esthetic restorations

- ✦ Unique chameleon effect due to sub-micron spherical fillers
- ✦ Perfect long-lasting aesthetics
- ✦ Optimal handling properties
- ✦ Outstanding physical properties

COMPOSITES

Shape perfected

Composite has become an important and indispensable part of the treatment concept in dental practices in the context of adhesive dentistry.

At the same time, the demands placed on composites as aesthetic restorative materials by both dentists and patients have increased. In addition to the high esthetic requirements, the composite must also secure a reliable restoration based on excellent physical properties. However, the basic prerequisite for achieving an excellent esthetic and durable restoration is ease of use of the composite.

In order to meet this basic requirement and the demands of the dentist and the patient for an esthetic and reliable restorative material, TOKUYAMA DENTAL

designed unique composites that meet all these requirements. With the development concept for the ESTELITE and OMNICHROMA composites, TOKUYAMA meets the current demands for a state-of-the-art composite in terms of aesthetics, physics and ease of use. The unique ESTELITE and OMNICHROMA development concept is based on two essential components:

The size- and shape-controlled spherical composite fillers form the basis for reliable physical properties and aesthetics, which corresponds to a natural tooth.



An innovative polymerization process in the ESTELITE composite also ensures extremely fast but controlled curing without colour change after polymerization.

COMPOSITES

The development objective

A combination of aesthetics, reliability and usability

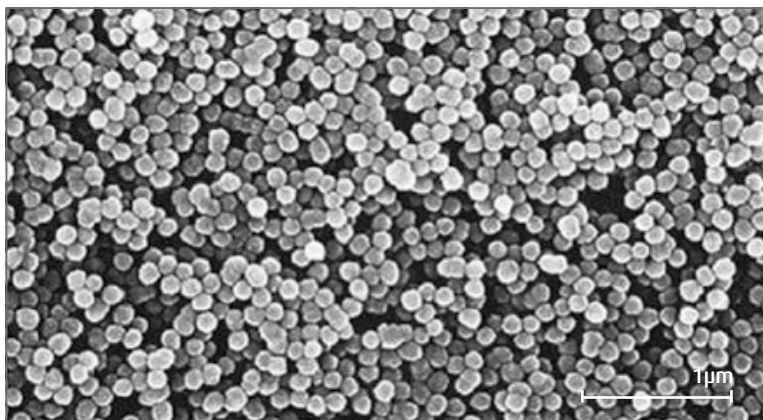
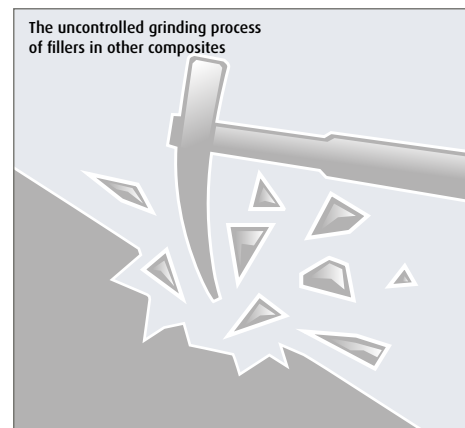
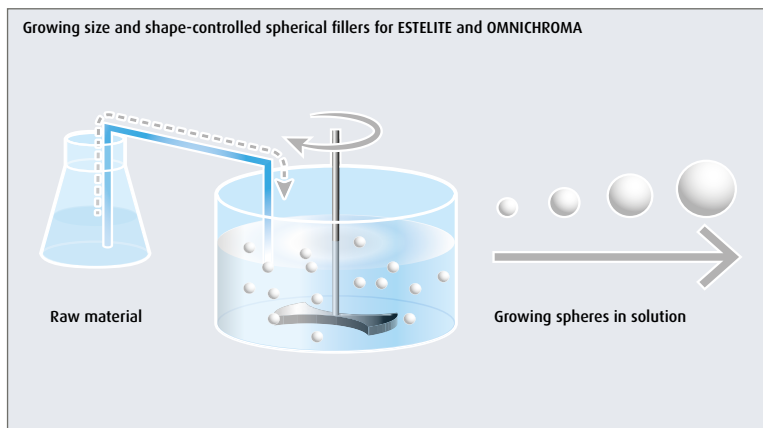
The extraordinary composites ESTELITE and OMNICHROMA are the result of an intensively sophisticated and innovative development concept. Size- and shape-controlled spherical sub-micron fillers, which are obtained in a fine manufacturing

process, set new standards for aesthetic composite restorations. The long-standing development of the manufacturing process for fillers with special aesthetic, physical and user-friendly properties is the basis for the outstanding result.

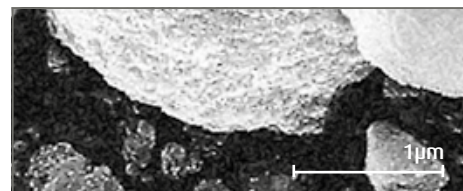
Thanks to the unique fillers, ESTELITE and OMNICHROMA are extremely user-friendly to work with, as they do not stick to the spatula and are easy to polish.

Produced to perfection – Ultrafine spherical fillers

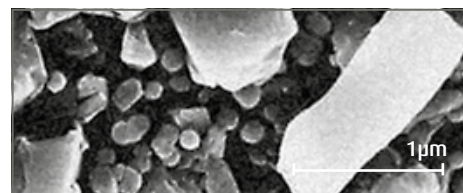
Compare growing fillers by the sol-gel process to the conventional grinding process



ESTELITE SIGMA QUICK (TOKUYAMA DENTAL)



Filtek Supreme XT (3M Espe)



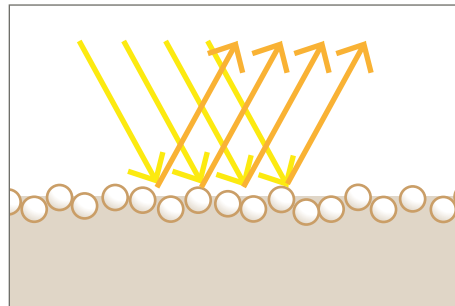
Tetric EvoCeram (Ivoclar Vivadent)

COMPOSITES

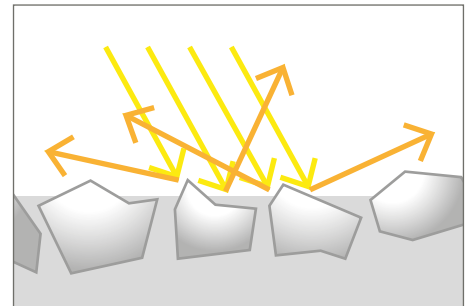
The principle of aesthetics and reliability – ultrafine spherical fillers

Mirror reflection

ESTELITE's and OMNICHROMA's spherical sub-micron fillers reflect light uniformly – like a mirror. The rough surfaces of other composites scatter light diffusely. On smooth surfaces, such as natural enamel, light is reflected away at the same angle (the angle of reflection equals the angle of incidence – the law of reflection). Our composites thus ensure a natural aesthetic appearance.



ESTELITE und OMNICHROMA (TOKUYAMA DENTAL)



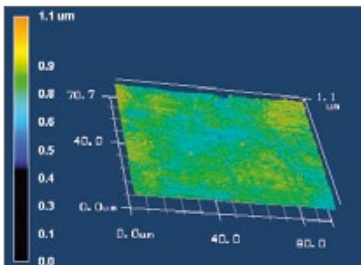
Conventional nano-hybrid fillers

Lustre effect

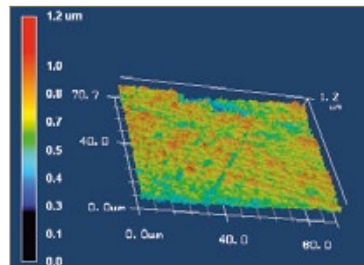
Smooth surfaces reflect light with an equal angle of incidence and reflection, creating a high degree of lustre.

Rough surfaces, on the other hand, reflect light in a random manner creating a dull matt appearance.

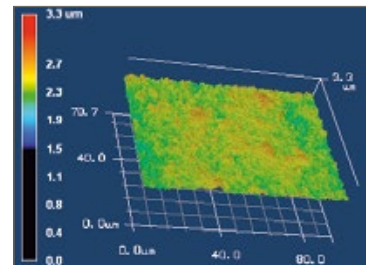
Identically shaped ESTELITE and OMNICHROMA sub-micron fillers produce an extremely smooth surface with a long-lasting lustre.



ESTELITE SIGMA QUICK (TOKUYAMA DENTAL)



Venus Diamond (Kulzer)



Filtek Supreme XT (3M Espe)

Source: TOKUYAMA DENTAL R&D

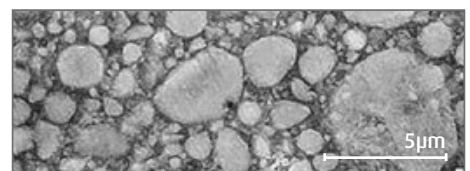
Abrasion resistance

ESTELITE's and OMNICHROMA's uniform and small spherical fillers are not easy to dislodge and create a very smooth surface that is highly resistant to abrasion.

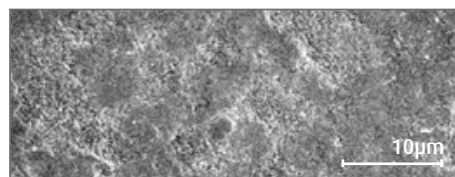
The abrasion-resistant surface of ESTELITE and OMNICHROMA remains smooth permanently, so that the initial lustre of this composites remains permanent too. It does not become dull.



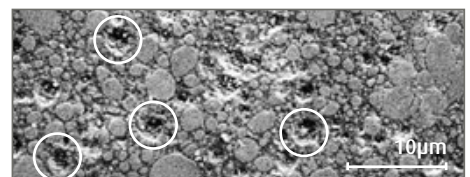
ESTELITE SIGMA QUICK (TOKUYAMA DENTAL) before the abrasion test.



Filtek Supreme XT (3M Espe) before the abrasion test.



ESTELITE SIGMA QUICK (TOKUYAMA DENTAL) after 50,000 load cycles. Retention of smoothness.



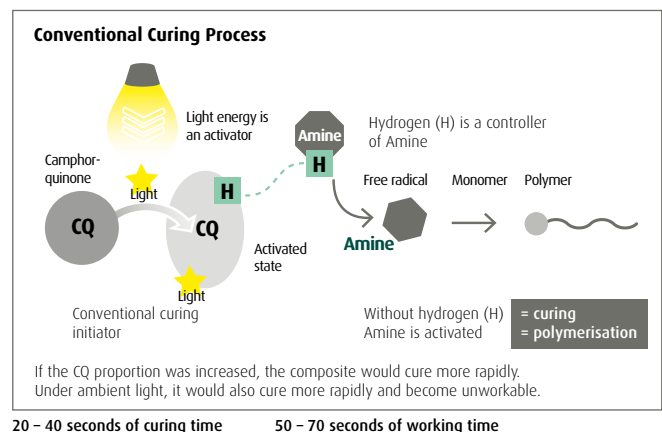
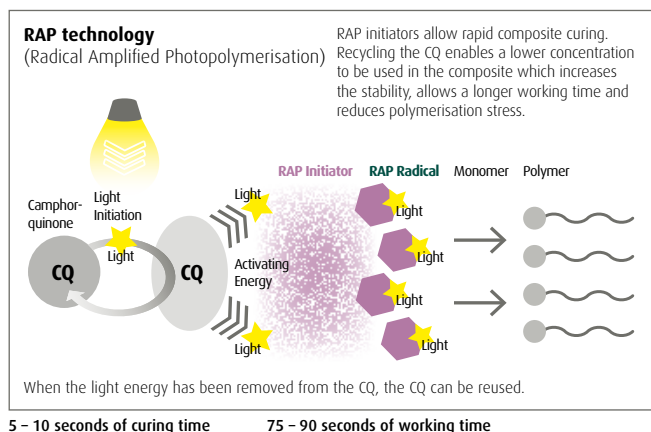
Filtek Supreme XT (3M Espe) after 50,000 load cycles. Fillers that have fallen out are visible.

Source: TOKUYAMA DENTAL R&D

ESTELITE COMPOSITES

ESTELITE – “RAPID” controlled polymerisation

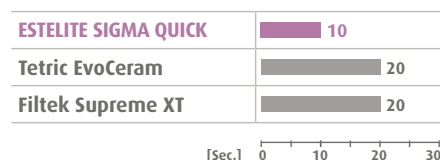
“RAPID” controlled polymerisation – Flexible working with rapid command cure



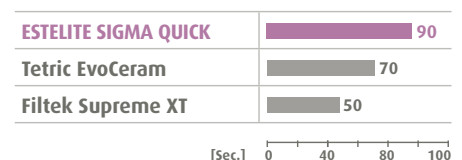
Polymerisation control

TOKUYAMA’s RAP (radical amplified polymerisation) process gives fast curing plus high level resistance to ambient light to ensure generous working time, if required. The ease of placement, sculpting and finishing is under your control with rapid curing to save you time.

Polymerisation time



Working time



Long-lasting shade

The RAP technology ensures imperceptible shade change since the proportion of camphorquinone is much lower. Patented RAP technology uses camphorquinone over and over again, dramatically reducing the high concentration that is necessary in other composites. The result: almost no shade change after polymerisation.



ESTELITE SIGMA QUICK
(TOKUYAMA DENTAL)



Filtek Supreme XT
(3M Espe)

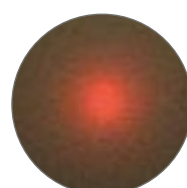


Tetric EvoCeram
(Ivoclar Vivadent)

Source: TOKUYAMA
DENTAL R&D

Diffusion & Transmission

The high diffusion and transmission properties of ESTELITE ensure a uniform and gradual transition between tooth and composite. ESTELITE acts like natural tooth enamel and ensures excellent marginal adaption without the need for bevelling.



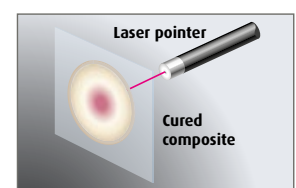
ESTELITE SIGMA QUICK
(TOKUYAMA DENTAL)



Filtek Supreme XT
(3M Espe)



Tetric EvoCeram
(Ivoclar Vivadent)



Source: TOKUYAMA
DENTAL R&D

OMNICHROMA

The Future of Composites:
Infinitely from A1 to D4 in a Single Syringe



Colour through light: For the first time, colours are not created by the addition of pigments, but rather by deliberately induced structural colours combining with the reflected colour of the surrounding tooth. The OMNICHROMA phenomenon uses the Smart Chromatic Technology along with the spherical fillers from TOKUYAMA, which are manufactured according to the "cultured pearl principle".

Indications

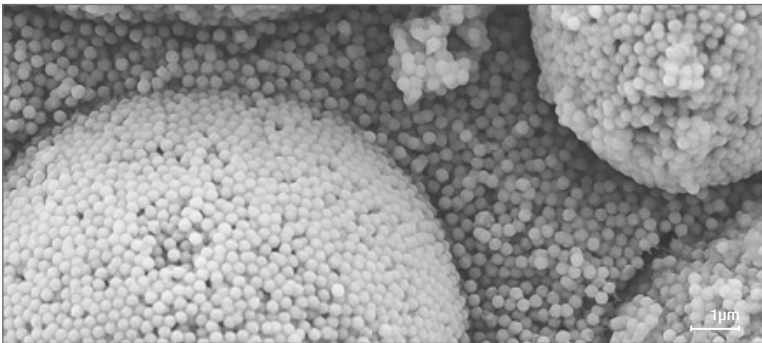
- ✦ Anterior and posterior areas
- ✦ Composite veneers
- ✦ Diastema closure
- ✦ Composite/ceramic repairs

The effect: A single composite for all colours. Uniquely aesthetic. Uniquely smooth and shiny. Uniquely simple and time saving.

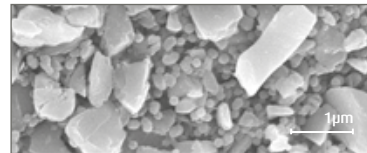
Properties

- ✦ Perfect colour matching
- ✦ Simplified Inventory Management
- ✦ Excellent adaptativity
- ✦ Non-sticky
- ✦ Good polishability
- ✦ Remarkable glossiness

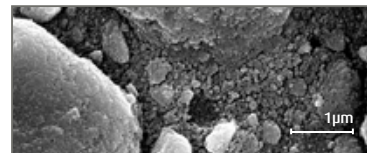
OMNICHROMA in a comparison study



OMNICHROMA (TOKUYAMA DENTAL)



Tetric EvoCeram (Ivoclar Vivadent)



Filtek Supreme XTE (3M Espe)

Source: TOKUYAMA
DENTAL R&D

A colour that adapts

In contrast to conventional composites, OMNICHROMA is intended to undergo an extreme colour change after curing and is also very practical when modelling.

From white opaque at the beginning, the shade miraculously adapts to the real tooth shade during light curing.

The semi-translucent final shade allows a combination of the real tooth shade and the structural colour of OMNICHROMA.

Clinical case – First experiences with OMNICHROMA

*"A dentist's dream coming true:
always the right colour!"*

Dr Erik-Jan Muts



OMNICHROMA BLOCKER

The ideal supplement for OMNICHROMA



OMNICHROMA BLOCKER is used if OMNICHROMA is not to adjust to the colour of a strongly discoloured cavity or if a higher opacity is required to cover the oral cavity in the case of larger class III or IV defects.

Indications

- ✦ Masking of slight discolourations
- ✦ Reconstructing highly opaque tooth

Properties

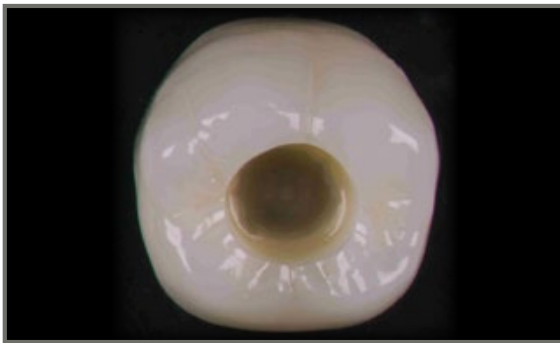
- ✦ Ideal supplement for OMNICHROMA
- ✦ Good polishability
- ✦ Strong masking effect

Blocker in clinical use

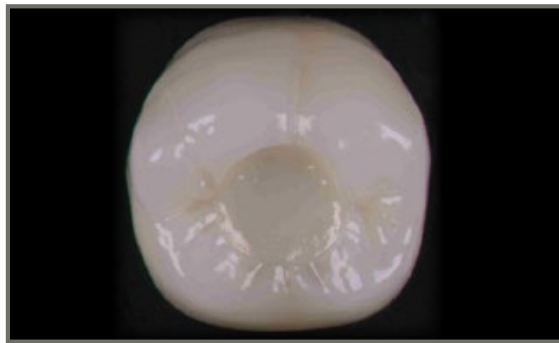
The general recommendation for the use of OMNICHROMA BLOCKER is a incremental

thickness of 0.5 mm. In the case of very opaque anterior teeth or strong discoloura-

tions, however, a larger layer thickness may also be necessary.



Discoloured cavity floor



OMNICHROMA BLOCKER (TOKUYAMA DENTAL)

Source: TOKUYAMA
DENTAL R&D

Clinical case – First experiences with OMNICHROMA

"First I was sceptical, if the colour matching would fit. But easy application, convincing polishing results and surprisingly good colour matching convinced me."

Dr Markus Lenders



ESTELITE ASTERIA

Highly esthetic, light-curing
anterior and posterior composite



ESTELITE ASTERIA is a light-cured radiopaque composite for anterior and posterior use. It considerably simplifies multilayer techniques, yet delivers outstanding aesthetics. The intense chameleon effect facilitates a remarkably natural look that cannot be distinguished from real tooth structure. Unlike multilayer techniques used with conventional composites, ESTELITE ASTERIA uses only 2 layers for optimal results.

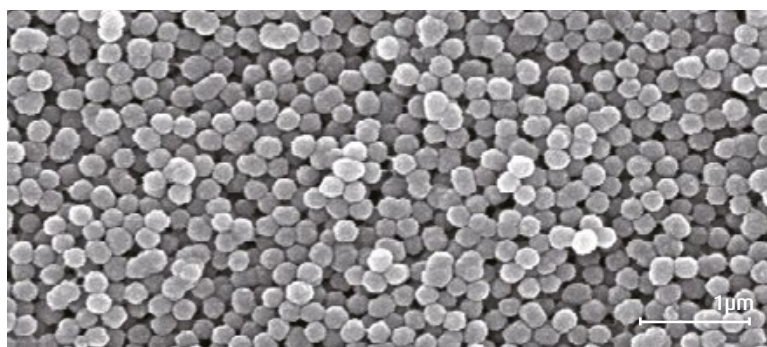
Indications

- ✦ Anterior and posterior areas
- ✦ Composite veneers
- ✦ Diastema closure
- ✦ Composite/ceramic repair

Properties

- ✦ Unique chameleon effect
- ✦ Rapid curing in 10 seconds
- ✦ Extended working time of 90 seconds
- ✦ Very high lustre durability
- ✦ Abrasion resistance
- ✦ Low linear shrinkage
- ✦ Optimal handling

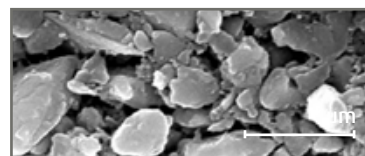
ESTELITE ASTERIA in a comparison study



ESTELITE ASTERIA (TOKUYAMA DENTAL)



CeramX (Dentsply Sirona)

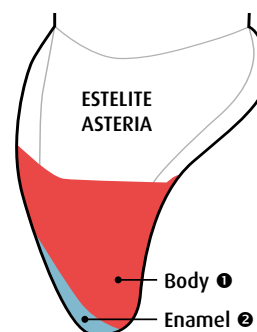
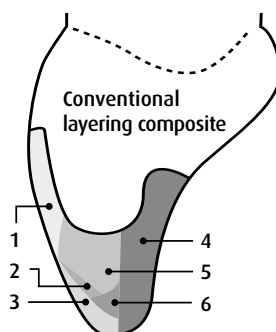


Essentia (GC)

Source: TOKUYAMA
DENTAL R&D

Easy application

While many aesthetic composites require elaborate layering techniques to achieve adequate results, ESTELITE ASTERIA has optical properties that allow anyone to easily achieve highly aesthetic results with only 2 layers.



Clinical Case – Anterior Tooth Trauma

"The control image after 7 days shows the excellent integration of the restoration. Due to the integration of the composite used and the simple layering technique, we were able to achieve a satisfactory result immediately, so that no further treatment was required."



"The body shade perfectly covered the transition line between tooth and restoration. An absolutely natural incisal area was created with the aid of enamel NE and translucent TE".



Source:
Prof. Simone
Grandini

ESTELITE COLOR

Flowable composite
for individual shade characterisation



ESTELITE COLOR is a low viscosity, flowable composite for individual colour characterization of direct and indirect plastic fillings. ESTELITE COLOR is applied under or between the layers of the composite restorative material to achieve individual and unique results.

Indications

- + Custom shade characterisation of direct and indirect resin restorations
- + Masking of discoloured teeth

Properties

- + 9 different shades
- + 4 different opaques
- + Low viscosity
- + Ideal supplement for ESTELITE ASTERIA

Range of shades

Shades:



Clear



White



Blue



Yellow



Grey



Ochre



Red



Lavender



Dark brown

Opaquer:



Pink Opaque



High Chroma Opaque



Medium Chroma Opaque



Low Chroma Opaque

With the aid of different stains it is possible to replicate a very wide range of tooth characteristics. At the incisal edge, for example, a tooth can be given a more youthful appearance by adding a blue tint or a more mature appearance by adding a grey tint. Chromatic shades are ideal for neutralising grey areas.

Clinical cases



Preparation of the tooth and adhesive treatment.



ESTELITE COLOR (LCO or MCO or HCO) is applied evenly over the discoloured areas to increase the colour value.



After light-curing, a layer of dentine/body shade with the desired shade and shade saturation is applied over the opaquer.



After light curing, the enamel shade is applied.

Source: TOKUYAMA DENTAL R&D



Dentine/body shade is applied and light-cured.



ESTELITE COLOR (Ochre and Dark Brown) can be applied sparingly to the pits and fissures to accentuate colour saturation and create a natural effect.



After light-curing, the enamel shade is applied to the cavity and sculpted to primary anatomy.

Source: TOKUYAMA DENTAL R&D

ESTELITE SIGMA QUICK

Light-curing highly aesthetic
anterior and posterior composite



ESTELITE SIGMA QUICK ist ein lichterhärtendes, röntgenopakes Komposit, das sowohl für ästhetische Restaurationen im Frontals auch im Seitenzahn angewendet werden kann. Mit seinen gezielt konzipierten sphärischen Sub-Mikro-Füllstoffen, mit einheitlicher Größe von 0,2 µm, ermöglicht ESTELITE SIGMA QUICK Restaurationen, die im Ergebnis nicht mehr als solche zu erkennen sind.

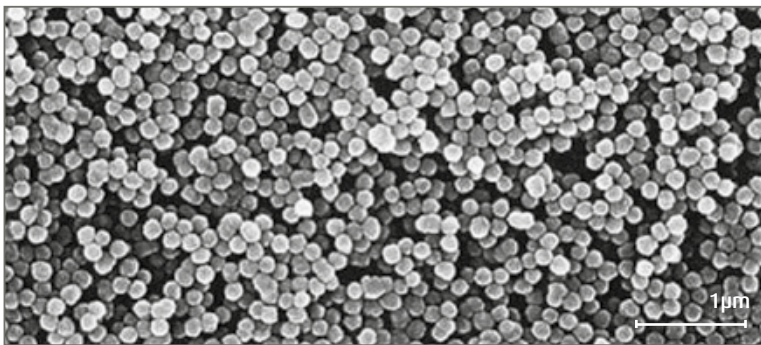
Indications

- ✦ Anterior and posterior areas
- ✦ Composite veneers
- ✦ Diastema closure
- ✦ Composite/ceramic repair

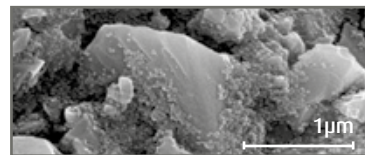
Properties

- ✦ Unique chameleon effect
- ✦ Rapid curing in 10 seconds
- ✦ Extended working time of 90 seconds
- ✦ Smooth surface with long-lasting lustre
- ✦ Excellent abrasion resistance
- ✦ Low linear shrinkage
- ✦ Quick and easy to polish

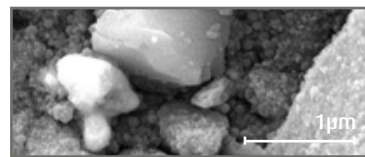
ESTELITE SIGMA QUICK in a comparison study



ESTELITE SIGMA QUICK (TOKUYAMA DENTAL)



Venus Pearl (Kulzer)

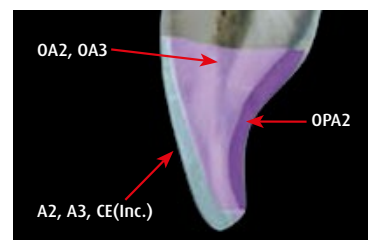


Harmonize (Kerr)

Source: TOKUYAMA
DENTAL R&D

Range of shades

| Opacity | Shade | Properties | Field of application |
|--------------|--|--|--|
| Transparency | CE (Clear Enamel) A1, A2, A3, A3.5, A4, A5 B1, B2, B3, B4, C1, C2, C3 | Considerable chameleon effect due to high transparency | Enamel, multi-shade restorations |
| Opalescence | OA1, OA2, OA3 | Slight opacity, chameleon effect | Dentine characterisation, multi-shade restorations, mono restorations |
| Opaque | OPA2 | Higher opacity, not suitable for covering metals | Fillings in the molar area, blocker to prevent anterior translucency effects |
| Bleaching | BW (Bleaching White), WE (White Enamel) | Transparency | Bleached teeth, insertion of shade effects |



The anatomical build-up of an anterior tooth in crosssection and its progressive reconstruction with ESTELITE SIGMA QUICK

Clinical case – Faster to lasting esthetic results

"ESTELITE SIGMA QUICK is a versatile composite system with impressive properties, both for demanding aesthetic reconstructions and for simple fillings in classes I-V.

Special aspects worth mentioning are the excellent chameleon effect, long-lasting lustre, a long working time and a very short polymerisation time."



Dr. C. Stockleben

ESTELITE POSTERIOR QUICK

Light-curing posterior composite



ESTELITE POSTERIOR QUICK is a lightcured radiopaque composite that ensures reliable restorations with strong and impressive physical properties. An optimal combination of special fillers gives ESTELITE POSTERIOR QUICK properties specifically designed to resist the demands of the posterior region, creating restorations that are reliable and long-lasting.

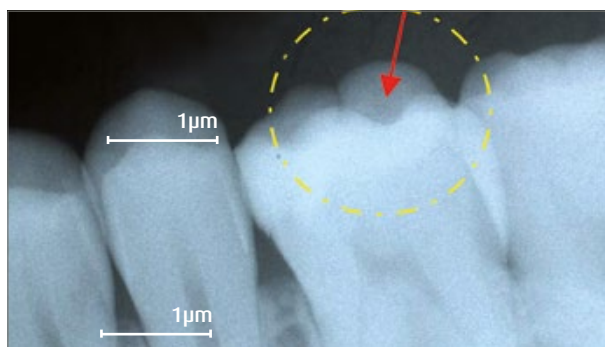
Indications

- ✦ Posterior area
- ✦ Composite/ceramic repair

Properties

- ✦ Unique physical properties
- ✦ Very good chameleon effect
- ✦ Rapid curing in 10 seconds
- ✦ Optimal handling
- ✦ Low linear shrinkage
- ✦ High radiopacity

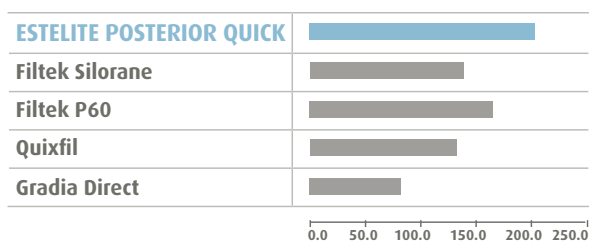
Radiopacity



With an excellent radiopacity of 290% Al mm, ESTELITE POSTERIOR QUICK is easy to see on X-ray images.

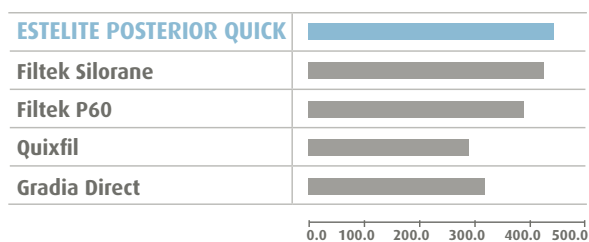
Source: TOKUYAMA DENTAL R&D

Flexural strength [MPa]



ESTELITE POSTERIOR QUICK mit 209 MPa

Compressive strength [MPa]



ESTELITE POSTERIOR QUICK mit 443 MPa

Source: TOKUYAMA DENTAL R&D

Clinical case – Tooth preservation using adhesive composite materials

"ESTELITE POSTERIOR QUICK represents the best choice when, in cavity classes I, II and IV, the fillings to be placed are exposed to high stress. Due to its very high radiopacity, with an 'aluminium equivalent of 290

per cent', ESTELITE POSTERIOR QUICK is particularly advantageous if the marginal seal or development of secondary caries in the marginal area of the filling has to be verified with an X-ray."



Dr. med. dent.
Markus Th. Firla

ESTELITE UNIVERSAL FLOW

3 different viscosities for all kind of purposes

ESTELITE UNIVERSAL FLOW offers the user, according to his preference or also application, the optimal viscosity. The flow material is available in 3 different viscosities: Low, Medium or High. All viscosities have one thing in common: Universally applicable and resilient like a pasty composite.

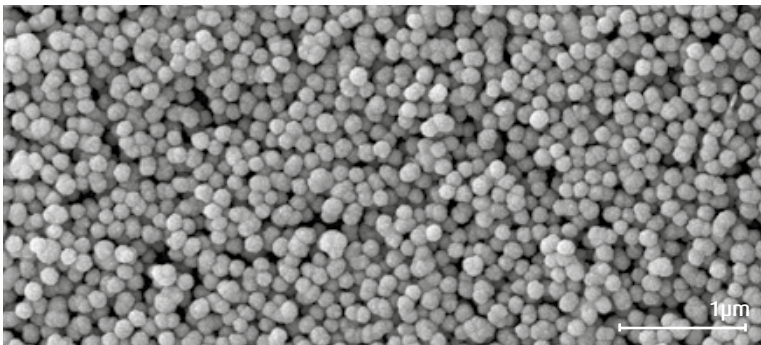
Indications

- + Anterior and posterior areas
- + Cavity liner
- + Blocking out undercuts
- + Composite/ceramic repair

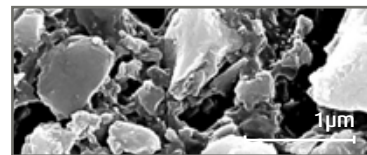
Properties

- + Choice of three viscosities
- + Enhanced chameleon effect
- + Rapid curing in 10 seconds
- + Improved flowability
- + High lustre durability
- + Low shrinkage
- + Excellent polishability
- + Outstanding resilience

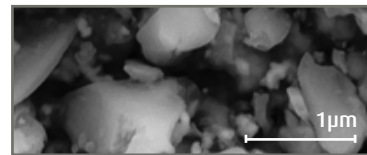
ESTELITE UNIVERSAL FLOW in a comparison study



ESTELITE UNIVERSAL FLOW (TOKUYAMA DENTAL)



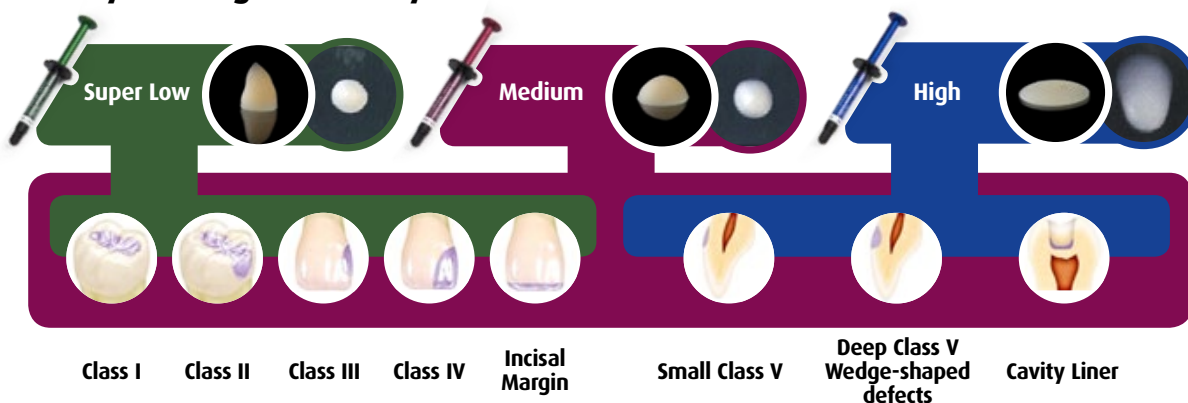
G-aenial Universal Flo (GC)



Tetric EvoFlow (Ivoclar Vivadent)

Source: TOKUYAMA DENTAL R&D

Always the right viscosity



Clinical case – tooth 46

“Always the right viscosity with a perfect polishability make this flow the means of choice.”



Dr Markus Lenders

ESTELITE BULK FILL FLOW

Innovative “edgeless” fillers ensure low-stress and safe curing.

Innovative “edgeless” fillers ensure low-stress and safe deep curing. Additionally the controlled refractive index of the ESTELITE BULK FILL FLOW also shows that bulkfill materials can also be esthetic.

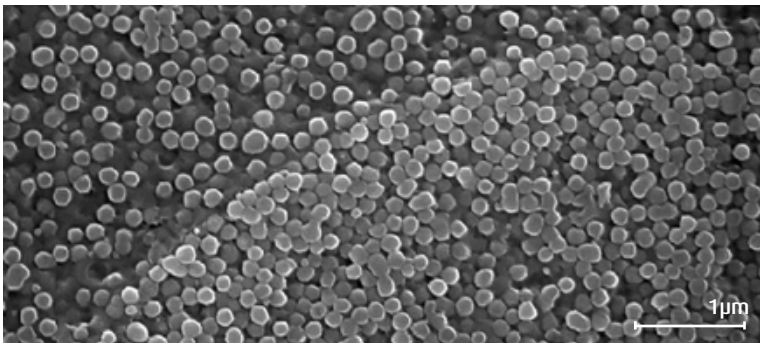
Indications

- ✦ Anterior and posterior areas
- ✦ Cavity liner
- ✦ Blocking out undercuts
- ✦ Composite/ceramic repair

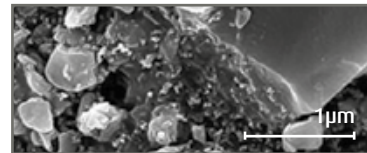
Properties

- ✦ Reduced polymerisation stress due to new “edgeless” composite fillers
- ✦ Sufficient opacity for esthetic restorations without capping layer
- ✦ Rapid curing in 10 seconds
- ✦ Excellent cavity adaption
- ✦ Self-levelling
- ✦ Controlled refractive index

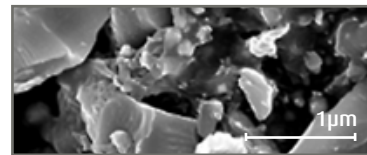
ESTELITE BULK FILL FLOW in a comparison study



ESTELITE BULK FILL FLOW (TOKUYAMA DENTAL)



SureFill SDR flow (Dentsply Sirona)

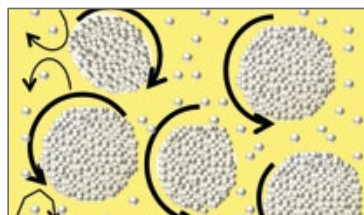


Tetric EvoFlow Bulk Fill (Ivoclar Vivadent)

Source: TOKUYAMA DENTAL R&D

Reduced polymerisation stress

The shape of the spherical fillers combined with the innovative “edgeless” composite fillers ensures that there is only little friction and thus a low stress level during polymerization. Optimal for safe depth curing up to 4mm.



ESTELITE BULK FILL FLOW: composite filler (“edgeless”)



Conventional composite: inorganic fillers (irregular)

Clinical case



Bulkfill composite + occlusal top layer

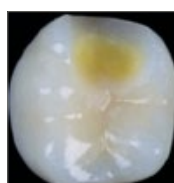


ESTELITE BULK FILL FLOW without occlusal top layer

Aesthetic result

The technology of spherical fillers allows TOKUYAMA DENTAL also to control the refractive index. This is used in the ESTELITE BULK FILL FLOW. The uncured material is initially translucent so that the polymerization light penetrates to the bottom of the cavity.

During the polymerization process, the material becomes increasingly opaque and covers so well that no additional capping layer is required. In this way, fast and esthetic restorations are achieved.



Class II cavity



ESTELITE BULK FILL FLOW (TOKUYAMA DENTAL)








Filtek Bulk Fill (3M Espe)





Venus Bulk Fill (Kulzer)

PRODUCT OVERVIEW PASTE

| | | High-End composite | Universal composite | | | Posterior composite |
|--|-----------|--|--|--|---|--|
| | |  |  |  |  |  |
| | | ESTELITE ASTERIA | ESTELITE SIGMA QUICK | OMNICHROMA | OMNICHROMA BLOCKER | ESTELITE POSTERIOR QUICK |
| Class I | Stability | Very good | Very good | Very good | — | Excellent |
| Class II | Aesthetic | Excellent | Excellent | Very good | — | Very good |
| Class III | Aesthetic | Excellent | Excellent | Very good | — | Good |
| Class IV | Aesthetic | Excellent | Excellent | Very good | — | Good |
| Class V | Aesthetic | Excellent | Excellent | Very good | — | Good |
| Small cavities | Handling | — | — | — | — | — |
| Cavity lining, flat tunnel-formed cavities | Handling | — | — | — | — | — |
| Light curing | | Yes | Yes | Yes | Yes | Yes |
| Radiopaque | | Yes | Yes | Yes | Yes | Yes |
| Repair material for ceramics/composites | | Yes | Yes | Yes | Yes | Yes |
| Curing time | | 10 seconds | 10 seconds | 20 seconds | 20 seconds | 10 seconds |
| Annotations | | Sub-micron filler with spherical filler particles, simplified layering concept for excellent esthetics | Sub-micron filler, extremely fast polymerization, excellent esthetics | Controlled sub-micron fillers to create structural colour, perfect colour matching | Sub-micron filler with increased opacity against discolouration and for highly opaque teeth | Combination of sub-micron fillers and irregularly shaped fillers, extremely fast polymerization, extremely resilient |
| Shades | | 12 shades: A1B, A2B, A3B, A3.5B, A4B, B3B, BL, NE, TE, YE, WE, OcE | 20 shades: A1, A2, A3, A3.5, A4, A5, B1, B2, B3, B4, C1, C2, C3, OA1, OA2, OA3, OPA2, BW, WE, Inc. (CE) | 1 shade: Universal | 1 shade: Opaque | 4 shades: A1, A2, A3, CE |
| Available as PLT | | Yes | Yes | Yes | Yes | No |

*Each product has been evaluated according to the criteria of aesthetics, physical properties and machining properties. With regard to the "first criterion", the most important feature was highlighted and evaluated.

PRODUCT OVERVIEW FLOW

| | | High-End composite | Flowable composite | | | Bulk Fill |
|--|-----------|--|---|--|---|---|
| | |  |  |  |  |  |
| | | ESTELITE COLOR | ESTELITE UNIVERSAL FLOW HIGH | ESTELITE UNIVERSAL FLOW MEDIUM | ESTELITE UNIVERSAL FLOW SUPER LOW | ESTELITE BULK FILL FLOW |
| Class I | Stability | — | Excellent | Excellent | Excellent | Excellent |
| Class II | Aesthetic | — | Excellent | Excellent | Excellent | Excellent |
| Class III | Aesthetic | — | Good | Excellent | Excellent | Good |
| Class IV | Aesthetic | — | Good | Excellent | Excellent | Good |
| Class V | Aesthetic | — | Good | Excellent | Excellent | Good |
| Small cavities | Handling | — | Excellent | Very good | — | Excellent |
| Cavity lining, flat tunnel-formed cavities | Handling | — | Excellent | Very good | — | Excellent |
| Light curing | | Yes | Yes | Yes | Yes | Yes |
| Radiopaque | | Yes | Yes | Yes | Yes | Yes |
| Repair material for ceramics/composites | | Yes | Yes | Yes | Yes | Yes |
| Curing time | | 30 seconds | 10 seconds | 10 seconds | 10 seconds | 10 seconds |
| Annotations | | Sub-micron filler with enriched colour pigments | Spherical composite fillers and spherical sub-micron fillers | Spherical composite fillers and spherical sub-micron fillers | Spherical composite fillers and spherical sub-micron fillers | Spherical composite fillers and spherical sub-micron fillers |
| Shades | | 13 shades: blue, grey, lavender, ochre, dark brown, white, yellow, clear, red, pink opaque, low chroma opaque, medium chroma opaque, high chroma opaque | 7 shades: A1, A2, A3, A3.5, OPA2, OPA3, OPA4 | 12 shades: A1, A2, A3, A3.5, A4, A5, B3, OPA2, OPA3, OPA4, CE, BW | 6 shades: A1, A2, A3, A3.5, A4, A5 | 5 shades: A1, A2, A3, B1, U |
| Available as PLT | | No | No | Yes | No | Yes |

*Each product has been evaluated according to the criteria of aesthetics, physical properties and machining properties. With regard to the "first criterion", the most important feature was highlighted and evaluated.

Manufacturer



Tokuyama Dental Deutschland GmbH
Am Landwehrbach 5 | 48341 Altenberge | Germany
Tel.: +49 (0)2505 938513 | Fax: +49 (0)2505 938515
www.tokuyama-dental.de | info@tokuyama-dental.de